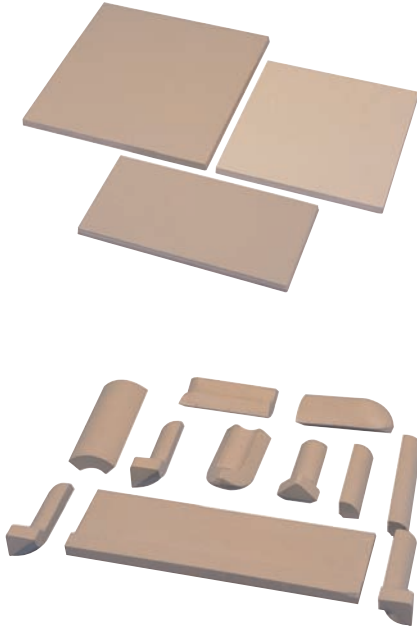
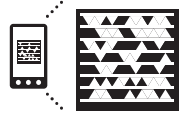


Industrial Flooring Solutions

— ANTİASİT Porcelain Tile

7201 ANTİASİT

Porcelain Tile



Description

Acid-resistant porcelain tile suitable for industrial floorings and walls.

Fields of Application

- In the food industry (dairies, abattoirs, breweries, wine- cellars, conserved - food plants, etc.), textile industry, pharmaceutical industry, shops and areas where hygiene is required,
- In Industrial floors and walls where high mechanical and chemical resistance is required.
- On laboratory benches, industrial kitchen work surfaces.

Properties

- Excellent mechanical and chemical resistance.
- Resistant to high temperatures.
- Resistant to wearing and scratching.
- Slip resistant.
- Resistant to freeze-thaw.
- Low water absorption, therefore easy to clean which ensures hygiene.
- Extremely resistant to heavy traffic.
- Environmentally friendly.
- Antistatic.

Application

- Install the tiles by following the regular tile installation methods. Use EPOTECH+ as adhesive and grout and GRANİTECH as adhesive according to the projects described at product pages.
- Baseboard concave and convex parts are the complementary elements of ANTİASİT Porcelain Tile.

Safety Advice

- Do not breathe the dust occurred during dry cutting.

Packaging

- For 115 x 240 x 14 mm 0.52 m² / box
- For 240 x 240 x 14 mm 0.57 m² / box

Technical Properties

(at 23° C and 50% RH)

General Data

Appearance	Light beige
Dimensions*	115 x 240 x 14 mm 240 x 240 x 14 mm.

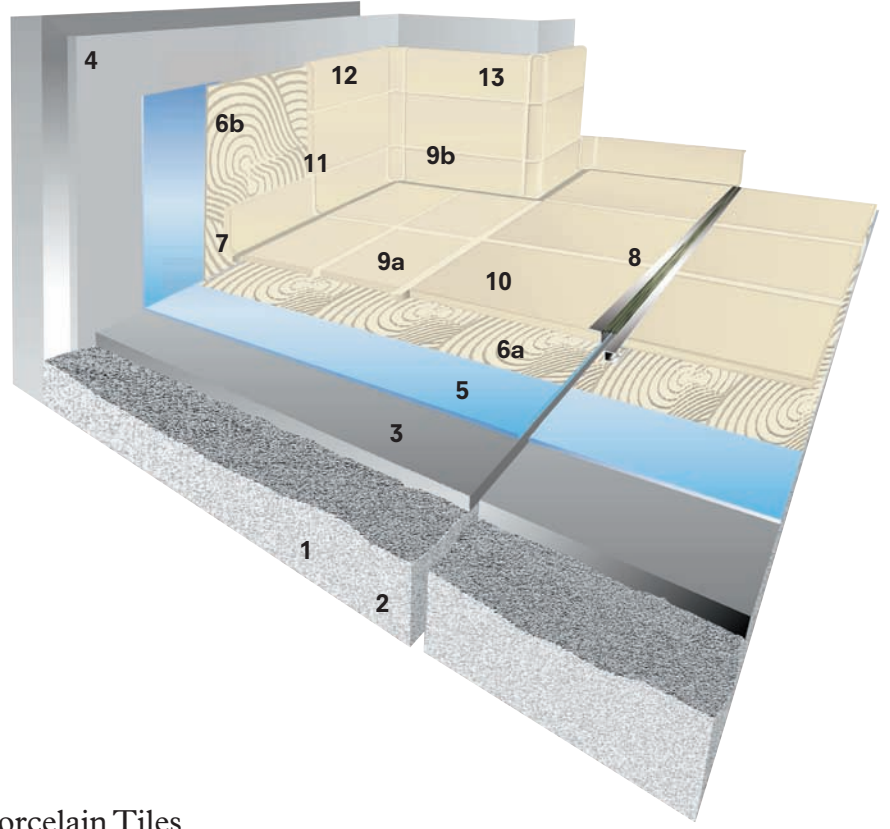
Performance Data

Thermal Expansion	6.08 x 10 ⁻⁶ (at 200° C)
Flexural Strength	45 N/ mm ²
Resistance to Abrasion	130 mm ³ /cm ³
Water Absorption	0.05%
Surface Hardness	7 mohs
Resistance to Solvents and Oils	Very good
Resistance to Acids and Alkali	Excellent, except hydrofluoric acid and fluoride salts.



Industrial Flooring Solutions

- 1 Concrete
- 2 Expansion joint
- 3 Levelling screed
- 4 Plaster
- 5 Synthetic membrane (If necessary)
- 6a EPOTECH+ / GRANİTECH adhesives
- 6b EPOTECH+ / GRANİTECH adhesives
- 7 Semi elastic epoxy grout / KALEPOLYMAS Polyurethane Mastic
- 8 Expansion Joints (KALEPOLYMAS polyuret hane sealant or expansion profile)
- 9a EPOTECH+ epoxy grout
- 9b EPOTECH+ epoxy grout
- 10 ANTİASİT Porcelain Tile
- 11 ANTİASİT Mopboard
- 12 ANTİASİT Inner Corner Piece
- 13 ANTİASİT Outer Corner Piece



Referances Of Kalekim ANTİASİT Porcelain Tiles

Dairies Production Facilities

Aslı Süt
Bahçıvan
Düziçi Hayat Süt Fabrikası
Gül Süt Ürünleri
Güneydoğu Süt Fabrikası
Kaanlar Gıda
Kars Karper
Kay-Sar Süt
Kervan Süt
Mis
Okçular Süt Fabrikası
Pınar Süt Ürünleri
Sakıp Ağa Gıda
Tahsildaroğlu
Tıkveşli
Ulaş Süt
Yörükoğlu Süt Ürünleri

Meat Production Facilities

Aytaç
Biga-Tekirdağ Keşan mezbahaları
Evren Et Entegre Tesisleri
Köy-Tür
Lades Tavuk
Pınar Entegre Et ve Un Sanayi

Hotels

Aqua Fantasy
Cesars Otel
Hilton İstanbul
Hotel Turkuaz
Klasis İstanbul

Marmaris Mares Otel
Silence Beach
Voyage Tur Otel

Shopping Malls

Kıpa
Pehlivanoğlu Marketçilik

Food - Beverage Facilities

Besler Gıda
Coca-Cola
Corvus A.Ş.
Dardanel Önentaş Gıda
Divan Pastanecilik
Doluca Şarapçılık
Efes Pilsen Biracılık
Fruko-Tamek
Konfrit Gıda
Koska Helva
Lidya Konservencilik
Meysüt Meyve
Nestle
Özmaya Fabrikası
Penguin Gıda
Pepsi Cola
Perfetti Van Melle
Pizza-Pizza Ltd.
Seyidoğlu Baklavacılık
Şölen Çikolata Fabrikası
Tadım Kuruyemiş
Tadım A.Ş. Meyva Salatası Fabrikası
Tamtat Konserve
Türk Tuborg
Unilever

Textile Facilities

Akal-Aksa Akrilik
Akbaş Tekstil
Akın Tekstil
Aksu Tekstil
Berdan Tekstil
Bossa Tekstil
Embosan Emprime
Tüp Merserize

Chemical Industries

Alarko Alsim D.Gaz Çevrim Santrali
Alemdar Kimya
Bağfaş Gübre Fab.
Eczacıbaşı Özgün Kimya
Evrensel Kozmetik Kan.ve Tic.A.Ş.
Huğlu Kromaj
İşdemir
Petkim Aliağa Rafinerisi
Toros Gübre Fabrikası

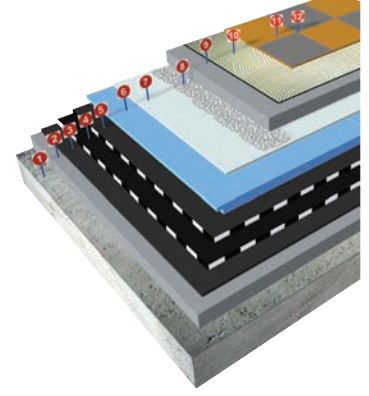
Other

BMW Center Servis
Mercedes Benz Türk
Genoto Center Servis
İsken Sugözü Enerji Santrali
MNG Kargo Taşımacılık
Florance Nightingale Hastanesi
3.Ana Bakım Merkez Komt. Ankara

Waterproofing Solutions

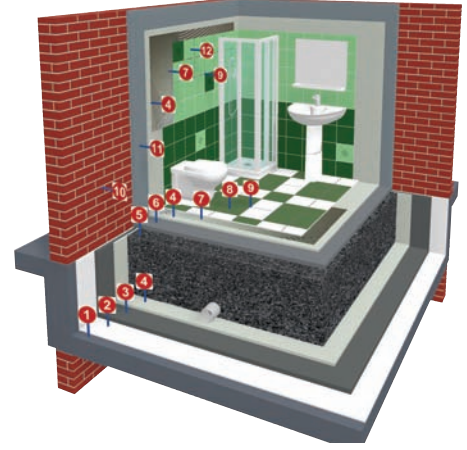
Application of Heat Insulated Roof

- 1 — Concrete
- 2 — Screed
- 3 — İZOLİNE ASTAR
- 4 — İZOLİNE PP/PC
- 5 — İZOLİNE PP
- 6 — XPS Thermal Insulation Board
- 7 — Felt
- 8 — Filler
- 9 — Screed
- 10 — TECHNOFLEX / TECHNOLIGHT
- 11 — Floor Tile
- 12 — FUGAFLEX / ULTRAFUGAFLEX / KALEPOLYMAS



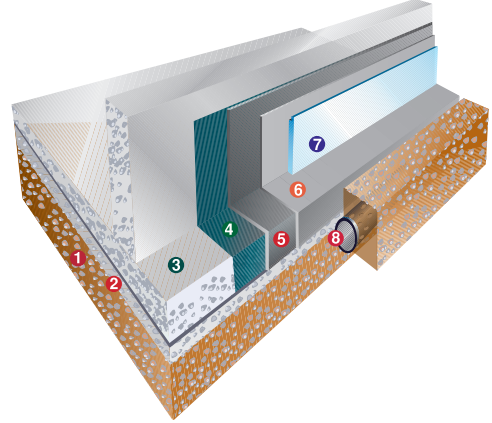
Hollow Floor Application

- 1 — Concrete
- 2 — KALEKİM ASTAR / KALEKİM DOLGULU ASTAR
- 3 — TAMİRART
- 4 — İZOLATEX / İZOFLEX
- 5 — Filler
- 6 — KALEKİM LATEX Added Screed
- 7 — 1051 KALEKİM / GRANİTECH / KALEKİMTOZUMAZ
- 8 — Floor Ceramic Tile
- 9 — ULTRAFUGA / FUGASİM
- 10 — Brick Wall
- 11 — KALEKİM LATEX Added 400 ds. Plaster
- 12 — Wall Ceramic Tile



Membrane Application of Foundation

- 1 — Ground
- 2 — Leveling concrete
- 3 — Mass concrete
- 4 — İZOLİNE ASTAR
- 5 — İZOLİNE PP
- 6 — İZOLİNE PP
- 7 — XPS Thermal Insulation Board
- 8 — Drain



Balcony - Terrace - Facade Application

- 1 — Concrete
- 2 — KALEKİM LATEX Added Screed (ds 350)
- 3 — KALEKİM ASTAR / KALEKİM DOLGULU ASTAR
- 4 — İZOLATEX - İZOLATEX PLUS
- 5 — TECHNOFLEX / TECHNOLIGHT
- 6 — Floor Ceramic Tile
- 7 — FUGAFLEX / ULTRAFUGAFLEX
- 8 — KALEKİM LATEX Added 400 ds. Plaster (external)
- 9 — TECHNOMAX 30
- 10 — FUGAFLEX / ULTRAFUGAFLEX / KALEPOLYMAS
- 11 — TECHNOFLEX / TECHNOLIGHT
- 12 — Marble

